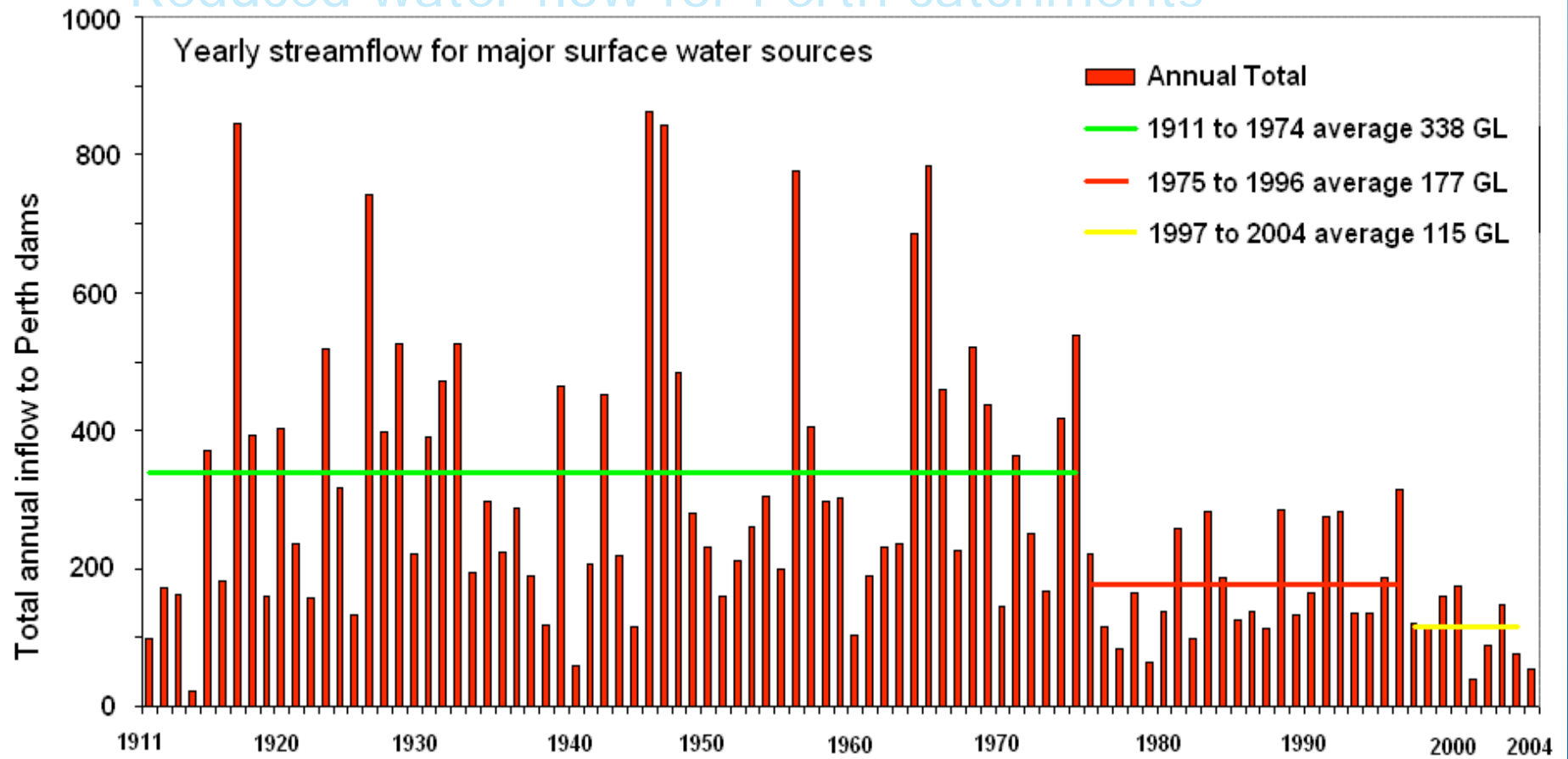


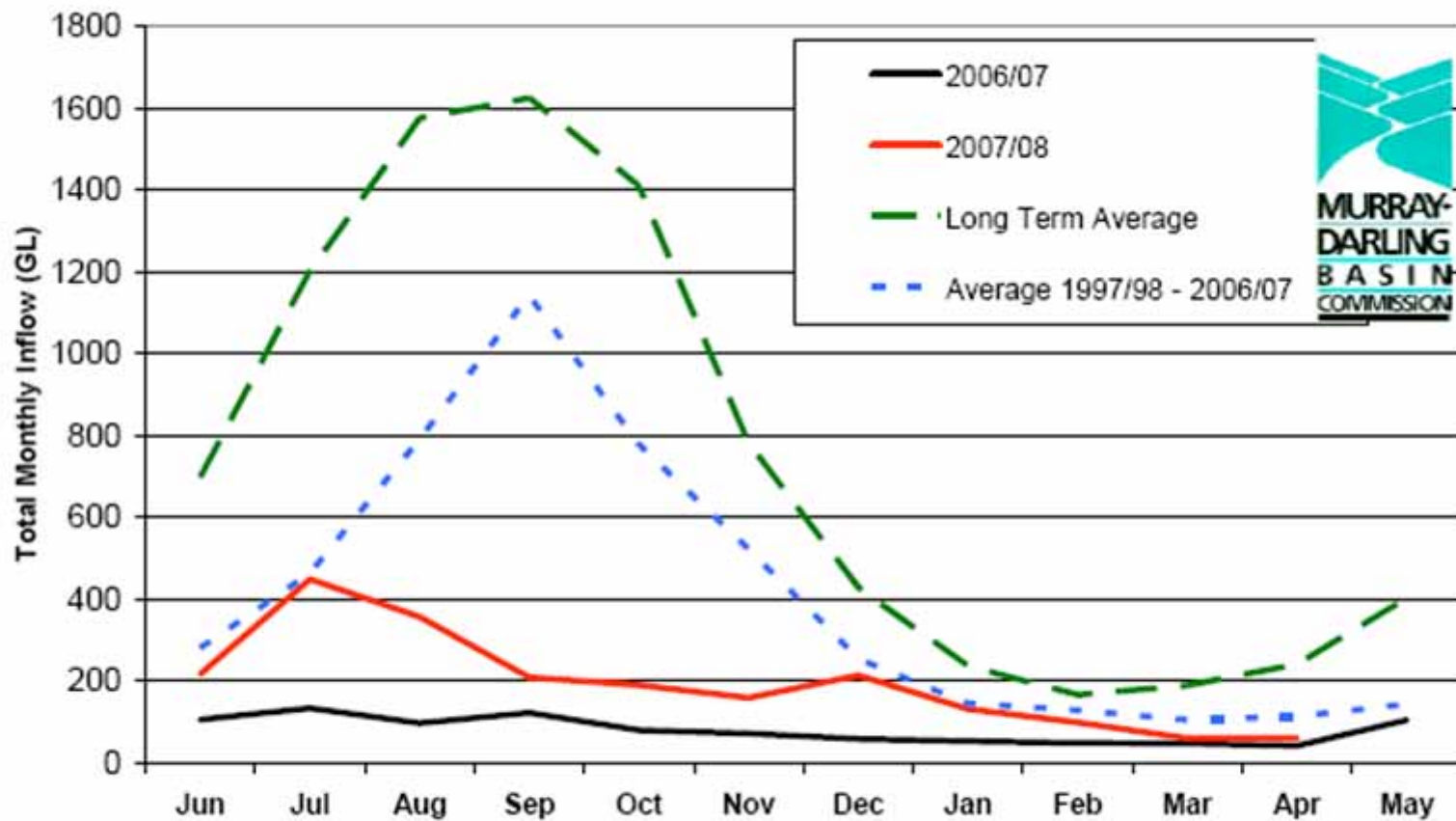


savewater!®

savewater!® Alliance
2008

Reduced water flow for Perth catchments





Murray-Darling Basin Commission May 2008



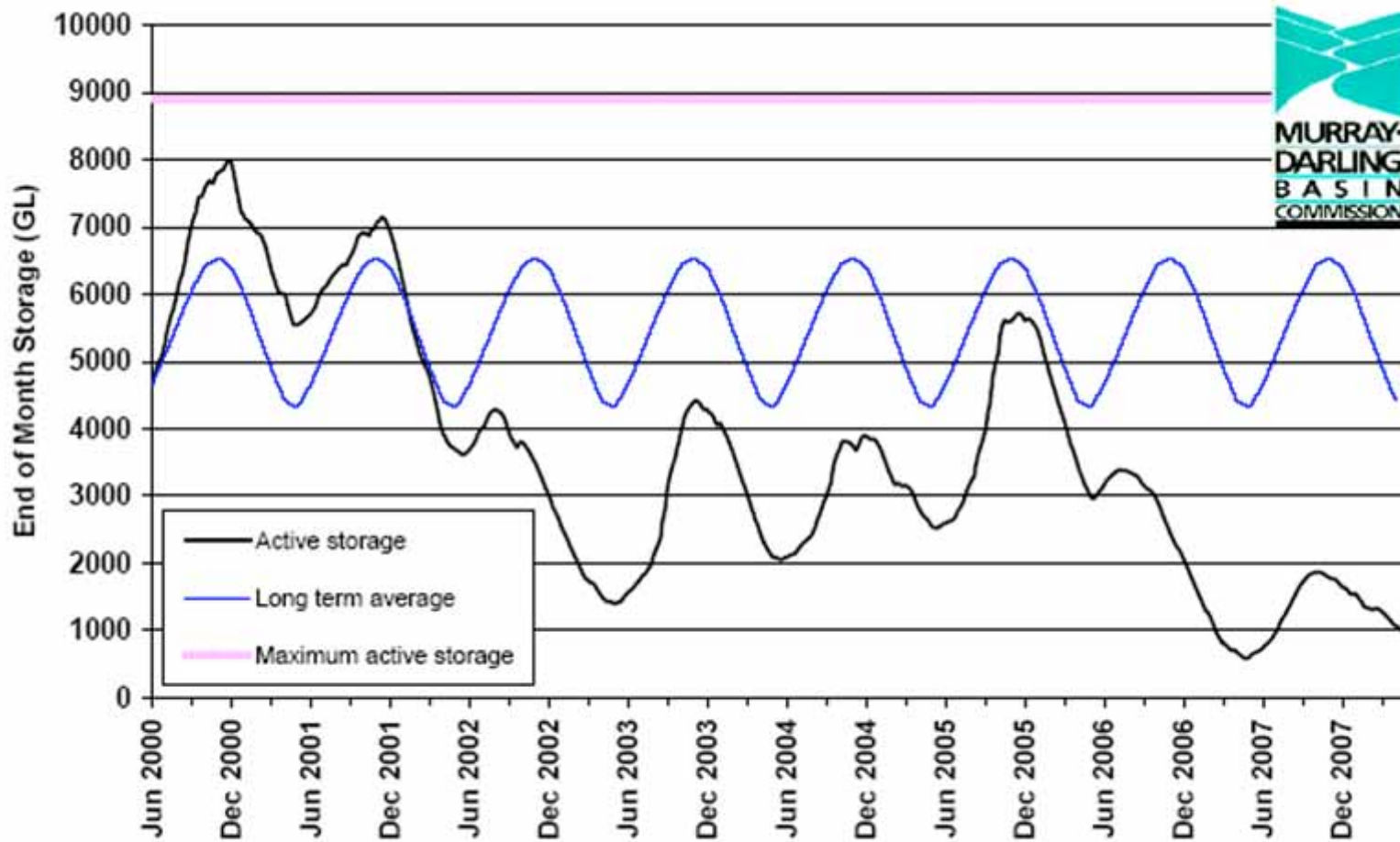


Figure 2. MDBC active storage; June 2000 to April 2008

Fix that drip!

- A dripping tap or shower can lose over two litres per hour.
- Although it doesn't sound like much that adds up to **about 5 buckets** a day, per tap, or almost **20,000 litres** of water each year.

Check for leaks

Why waste water – and pay for it – if you don't even get to use it?

- Check the meter
- If everything's definitely off and the meter is moving you probably have a serious leak – contact a plumber immediately

Saving water in the kitchen

- Flow restrictors and aerators are easy to install and reduce water from up to 20 L/min to between 2 and 9 L/min
- 4 star dishwashers are effective water and energy savers. Just remember to wait until it's full.

Saving water in the laundry

- Laundry sink flow restrictors more than halve the water
- Ozone & Water saving technologies can cut water and drainage costs by 68% and electricity by 83%

Saving water in the bathroom

- 6 minutes under a shower guzzler uses over 100 litres
- New technology showerheads reduce the flow to less than 9L/min without losing comfort
- 4 minute shower with 3 star showerhead = 36 litres
- Use a water conservation message
- Flow restrictors are great for bathroom taps too – use a 4L/min one on the basin tap

Saving water in the toilet

- Old toilets use 11L every flush
- Most dual flush toilets use 6L for a full flush and 3L for a half
- The latest use 4.5L and 3L
- Cistern displacement bag - save 1.8 litres every flush
- Use a cistern weight for manual flush time
- Check for leaks – food colour in the cistern
- A leaking toilet can waste up to 100 litres a day

How to change a showerhead DVD

- Short DVD
- Plumbing instructions
- How to change a washer
- How to fit an external flow restrictor
- How to change a showerhead
- How to read a water meter



Download from www.savewater.com.au

Motel Retrofit Trial

Smart Water Fund



Motel Trial

- Audited 9 motels across regional Victoria
- Typical size approx. 20 - 30 rooms
- Allocated all water used in water bill to areas and appliances of the motel

Products tested

- 3 star rated water efficient showerheads
- Flow control valves in basins
- Toilet cistern bags
- Toilet cistern weights
- Dual flush toilets
- Water conservation message

Savings so far – Motel 1

Showers, valves, message - 35 rooms		
Days since products installed	119	Days
Water used per person per day pre retrofit	170	L/person/day
Water used per person per day post retrofit	140	L/person/day
Savings %	17.6%	
Projected yearly water and sewer savings \$	Approx. \$1,000	Per annum
Estimated yearly energy savings \$	Approx. \$1,000	Per annum
Total projected savings \$	Approx. \$2,000	Per annum

Savings so far – Motel 2

Showers, cistern weight - 29 rooms		
Days since products installed	99	Days
Water used per person per day pre retrofit	223	L/person/day
Water used per person per day post retrofit	141	L/person/day
Savings %	36.8%	
Projected yearly water savings \$	Approx. \$475	Per annum
Estimated yearly energy savings \$	Approx. \$848	Per annum
Total projected savings \$	Approx. \$1,323	Per annum

Savings so far – Motel 3

Showers, valves - 24 rooms		
Days since products installed	73	Days
Water used per person per day pre retrofit	351	L/person/day
Water used per person per day post retrofit	233	L/person/day
Savings %	33.7%	
Projected yearly water savings \$	Approx. \$665	Per annum
Estimated yearly energy savings \$	Approx. \$818	Per annum
Total projected savings \$	Approx. \$1,483	Per annum

Heat Pumps - 20 Room Motel Example

- Capital Cost Quantum \$17,200
 - Estimated Federal Govt Solar Rebate \$19,316
 - Total Estimated Installation Cost \$4,000
- Estimated Annual Running Costs
 - Quantum \$2,386
 - Electric Units \$8,656
 - LPG Gas Units \$8,772
 - Solar Electric Boosted \$6,306